



ARCHITECTURAL
PORTFOLIO
2026



MLB was founded in 1987 with one director. Since then, this Cape Town-based firm has grown into a well-managed partnership with seven directors. To accommodate its growth, it expanded in 2013 by establishing a branch in Johannesburg and moved its Cape Town office to the CBD in 2017, enhancing its corporate presence.

Directors: Izak Burger, Herman Joubert, Leonard Arendze, and Shaun Heeger

The firm's portfolio encompasses a wide range of large projects, including mixed-use developments, commercial buildings, retail spaces, public buildings, universities, hospitality venues, luxury residential properties, retirement villages, industrial complexes, and self-storage facilities.

MLB Architects' design philosophy emphasizes a strong focus on the brief, context, sustainability, and professional service. We believe that design is an ongoing process that aims for purity and eliminates the superfluous. This involves understanding the purpose, maintaining clarity of concept, and paying meticulous attention to detail.

Architecture is the physical manifestation of external forces such as economics, politics, and sociology. We respond to these forces with an approach that focuses on creating an investment for the client, is historically and socially sensitive, and contributes meaningfully to the urban fabric.

MLB received an Award of Merit for the Gugulethu Sports Complex in a joint venture with Noero Wolff Architects. The firm has also garnered considerable media coverage, with over 30 printed articles. In 2014, MLB was awarded joint First Prize in the national competition to refurbish the Naspers block in Cape Town. More recently, its online presence and recognition have grown on reputable architectural websites such as Archdaily and Architizer.

We advocate for the design of sustainable buildings that are resource-efficient and environmentally responsive. Through passive design research and a light-touch approach that acknowledges change, scale, and materials, our results reflect advancements in built form, infrastructure, and evolving typologies.


The rapid pace of technological advancement challenges all industries to stay ahead of clients' requirements. At MLB, we embrace progress in materials and building techniques by working collaboratively with fellow professionals to ensure our buildings remain ahead of the times.


MLB's wide-ranging client base has been a key component of the company's success over the last 39 years, highlighted by the high degree of return business. We emphasize building relationships and aim to strengthen ties, as no practice can thrive in isolation.



HEAD OFFICE

Thomas Pattulo Building, 6th Floor West Wing
9 Jan Smuts Street, Cape Town City Centre, 8001
South Africa


 +27 21 180 1652

 +27 21 418 1707

 info@mlbarch.co.za

 [MLBArchitects](#)


 [mlb_arch](#)

 [company/mlb-architects](#)

 www.mlbarch.co.za

MIXED-USE

THE ROCKEFELLER

 Cnr Christiaan Barnard Str & Martin
 Hammerslag Way
 Foreshore, Cape Town



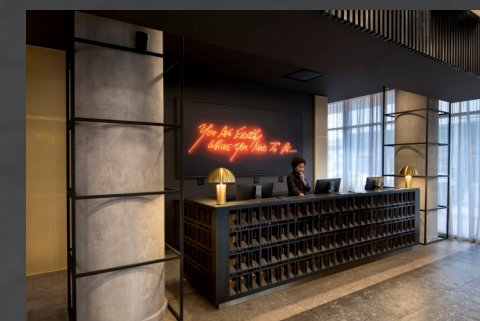
Ryan Joffe & Narrative



16 St mixed use development with hotel component



15 500



RESIDENTIAL

NETTLETON ROAD

Nettleton Road
Clifton, Cape Town



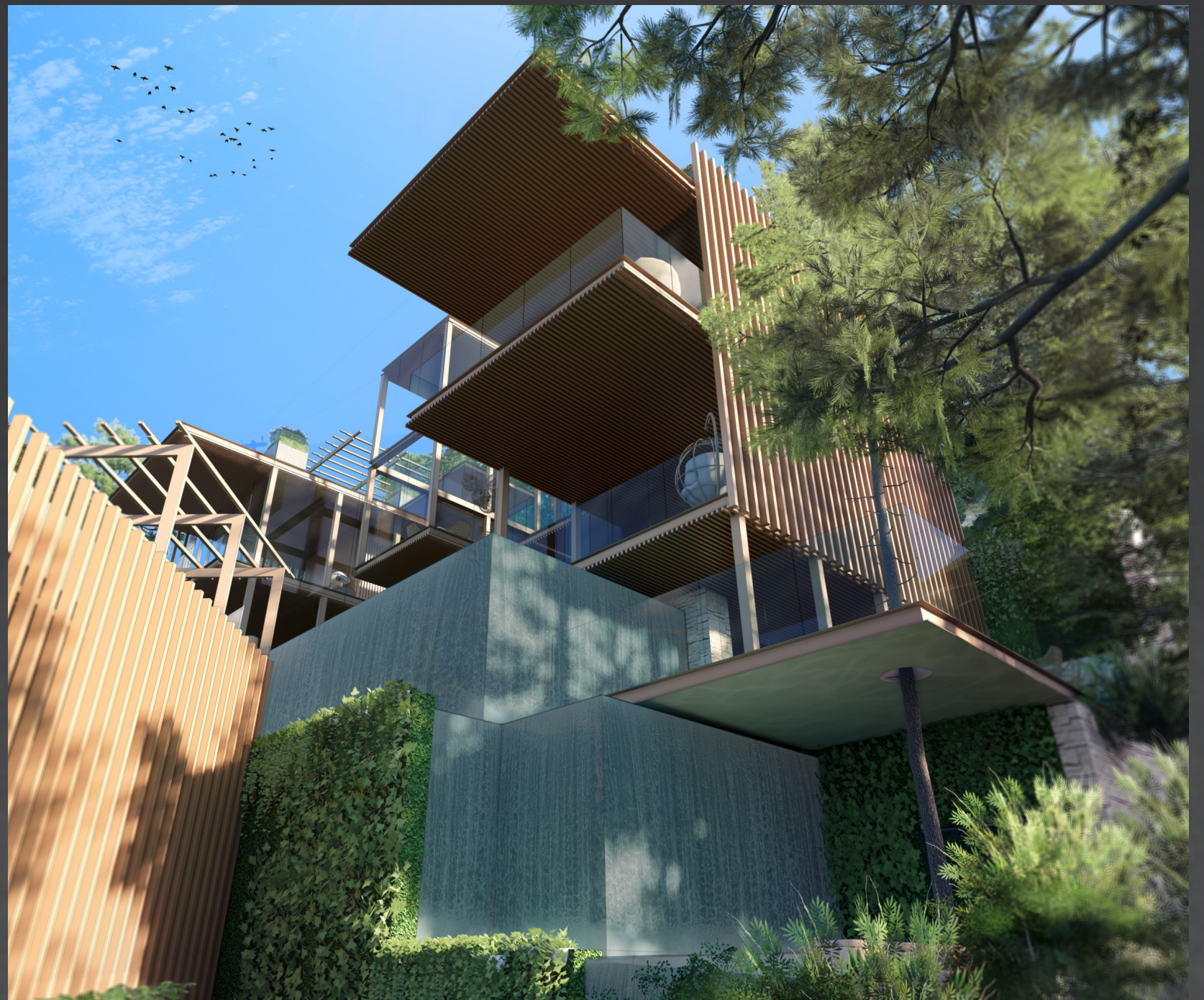
Private



Proposed new residential development



5 000



MIXED-USE

WEMBLEY SQUARE II

40 Solan Road
Gardens, Cape Town



Redefine Properties



Mixed-use, Commercial & Retail development



19 000



MIXED-USE

WEMBLEY SQUARE III

📍 Solan Road
Gardens, Cape Town



Redefine Properties



Mixed-use, Commercial & Retail development



4 600



COMMERCIAL

THE BOULEVARD

📍 Cnr Pontact & Nelson Roads
Woodstock, Cape Town



Redefine



Commercial development with retail component



10 000



MIXED-USE

THE EQUINOX

📍 154 Main Road
Sea Point, Cape Town



Berman Brothers



Mixed-use, Commercial & Retail development



7 000



PUBLIC SECTOR

NNR

Atlantic Avenue
Duynefontein, Cape Town



National Nuclear Regulator



Administrative office building



1 200



MIXED-USE

DEER PARK PLACE

📍 2 Deer Park Drive
Vredehoek, Cape Town



Signatura Property Development



Mixed-use, Commercial & Residential



1280



PUBLIC SECTOR

AIRPORT TERMINAL

📍 Cape Town, Western Cape



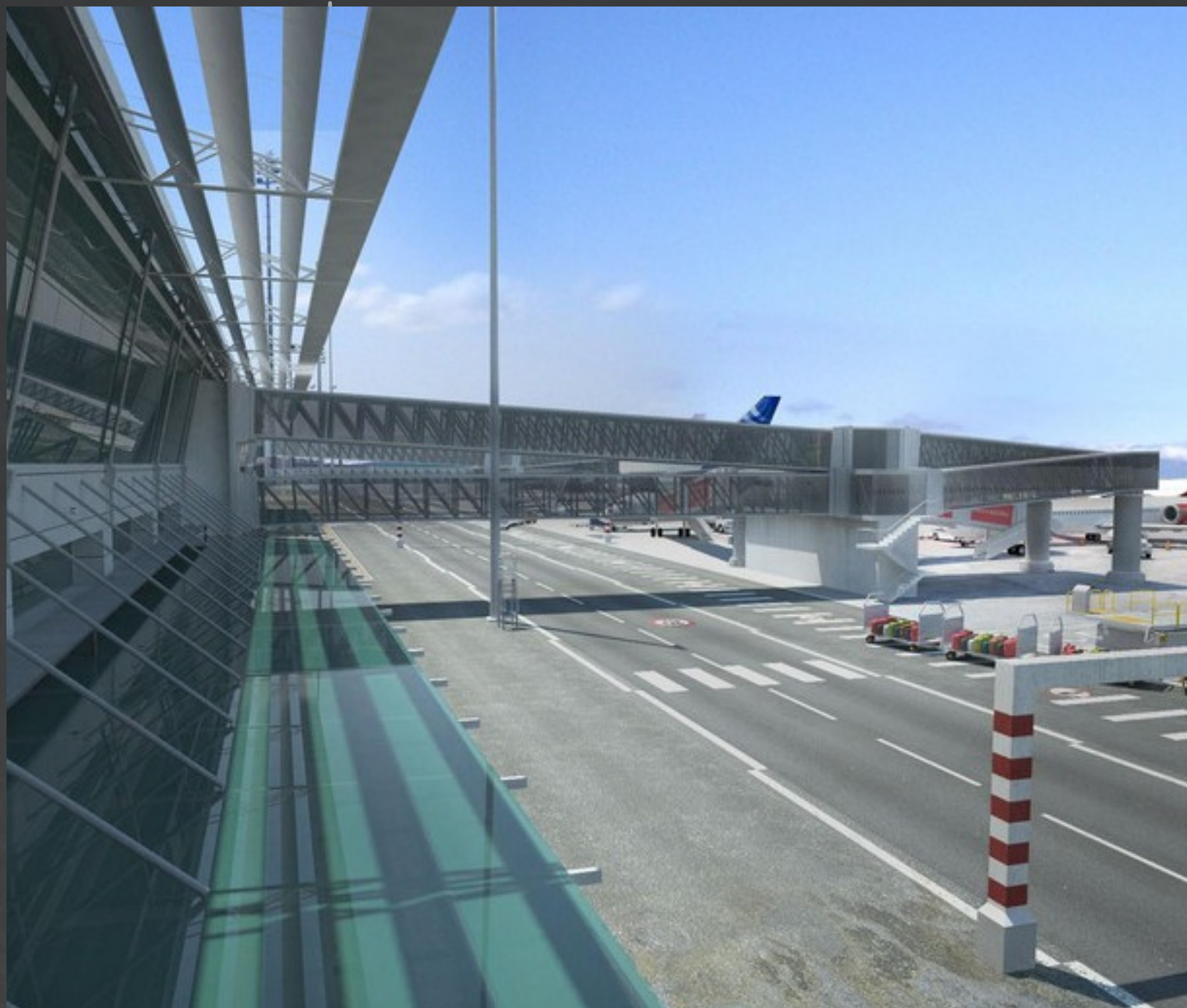
ACCSA



Administrative, Operational, Retail, Commercial, Customer Service



1600



RESIDENTIAL

STUDENT HAUS

📍 Highbury
Northern Suburbs, Western Cape



De Jure Property Holdings



Residential apartment units with clubhouse and gym facilities




7147



EDUCATIONAL

STELLENBOSCH UNIVERSITY SKILLS LAB

 Tygerberg, Cape Town, Western Cape



Stellenbosch University



Internal modernisation of the Tygerberg Medical Campus



1200



EDUCATIONAL

STELLENBOSCH UNIVERSITY TYGERBERG AUDITORIUM

Tygerberg, Cape Town, Western Cape



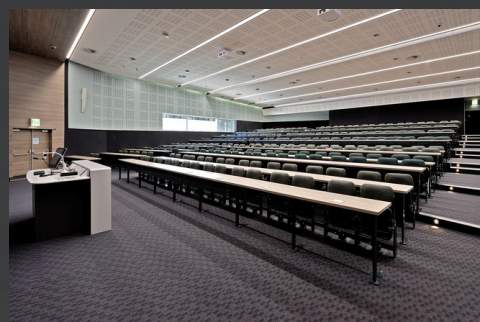
Stellenbosch University



Auditoriums, lecture and student facilities



3000



RESIDENTIAL

THE ADELPHI

📍 21 Bellair Road, Vredehoek
Cape Town, Western Cape



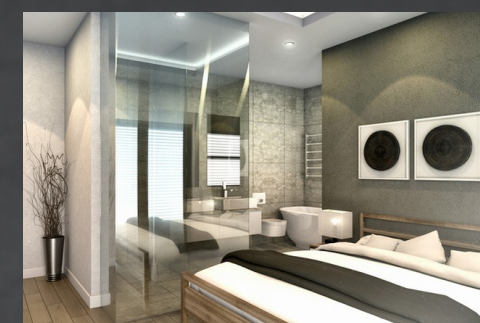
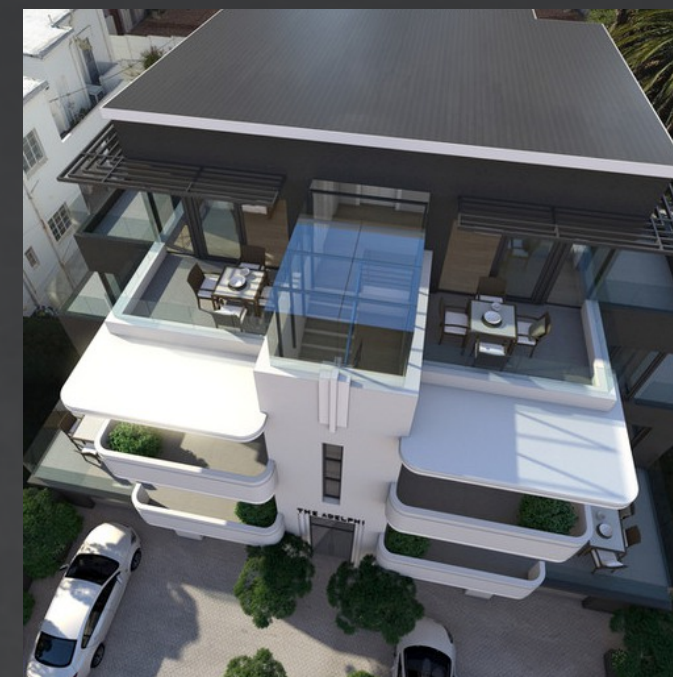
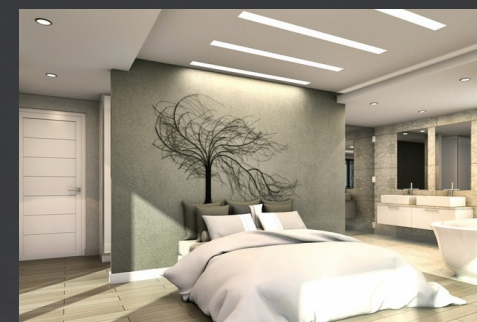
Bespoke Residences



Luxury Art Deco style residential apartments



800



HOSPITALITY

SOUTH BEACH

📍 6 Link Road
Camps Bay, Cape Town



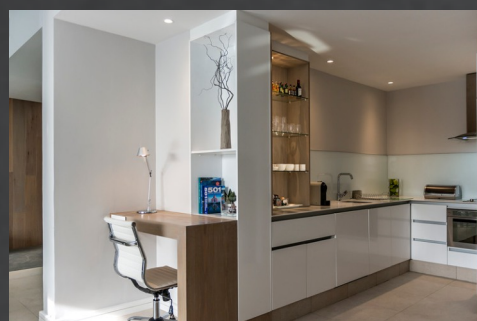
Blue Views Villas & Apartments



Boutique hotel & luxury self catering apartments



1000



HOSPITALITY

PEPPERCLUB HOTEL

167 Loop Street
Cape Town CBD, Western Cape



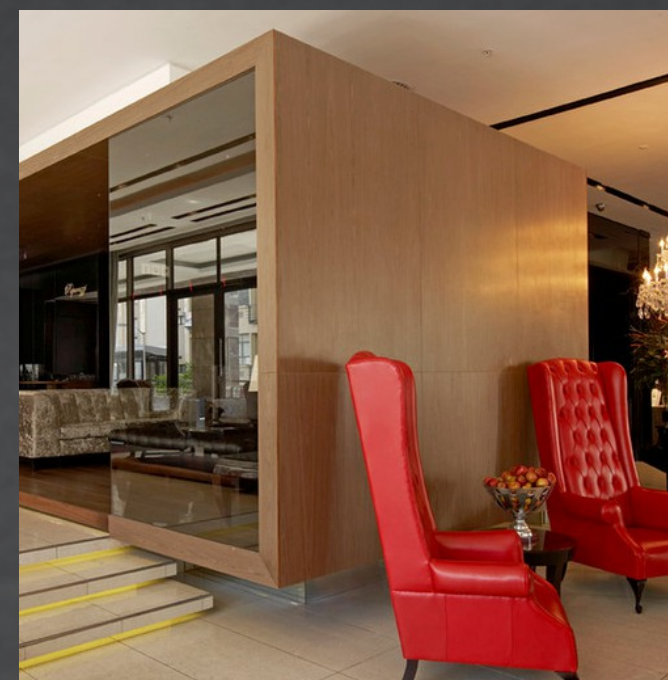
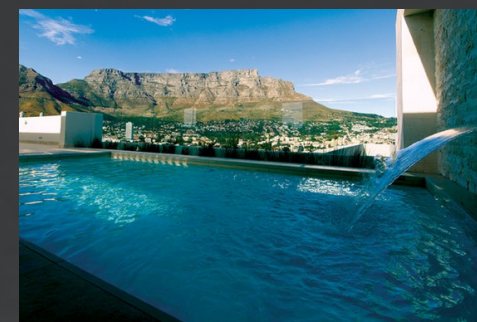
Faircape Group



Luxury hotel accommodation



15000



RESIDENTIAL

THE BEACON

📍 6 Romney Street
Green Point, Cape Town



Signatura Property Development



Luxury residential apartments



2000



RESIDENTIAL

INFINITY CAMPS BAY

📍 Camps Bay
Cape Town, Western Cape



The I-Group



Proposed new residential development



2194



INDUSTRIAL

STORAGE

📍 Table View, Cape Town



Storage



Industrial storage



10000





ARCHITECTURAL PORTFOLIO **2026**

END





DIRECTORS

Herman Joubert, Izak Burger,
Shaun Heeger, Leonard Arendze

HEAD OFFICE

Thomas Pattulo Building, 6th Floor West Wing
9 Jan Smuts Street, Cape Town City Centre, 8001
South Africa

 +27 21 180 1652

 +27 21 418 1707

 info@mlbarch.co.za

 [MLBArchitects](#)

 [mlb_arch](#)

 [company/mlb-architects](#)

 www.mlbarch.co.za