



SELECTED
WORKS
2021

ARCHITECTURAL PORTFOLIO

MLB was founded in 1987 with one director. Since then, this Cape Town based firm has grown into a well-managed partnership with seven directors. To accommodate growth it expanded in 2013 by establishing a branch in Johannesburg and moved to the Cape Town CBD in 2017, allowing for a greater corporate presence.

Directors - Izak Burger, Herman Joubert,
Leonard Arendze & Shaun Heeger

The firm's portfolio covers a wide range of large project types, including mixed-use, commercial, retail, public buildings, universities, hospitality, luxury residential, retirement cillages, industrial & self-storage.

MLB Architects design philosophy places a strong focus on brief, context, sustainability and professional service. We believe that design is an ongoing process aiming for purity and eliminating the superfluous; understanding purpose, clarity of concept and attention to detail.

Architecture is the physical manifestation of external forces such as economics, politics and sociology. We respond to this through an approach that focuses on creating an investment for the client, is historically and socially sensitive and becomes a meaningful contribution to the urban fabric.

MLB received an Award of Merit for the Gugulethu Sports Complex in joined venture with Noero Wolff Architects. It has also received considerable coverage over the years (more than 30 printed media articles). In 2014, MLB was awarded joint First Prize for the national competition to refurbish the Naspers block in Cape Town. More recently its online presence and recognition has grown on reputable architectural websites such as Archdaily and Architizer.

We advocate the design of sustainable buildings that are resource efficient and environmentally responsive. Through passive design research and a light touch approach that acknowledge change, scale and materials, the results reflect advancements in built form, infrastructure and evolving typologies.

The rapid pace at which technology advances challenges all industries to stay ahead with clients' requirements. At MLB, we embrace progress in materials and building techniques by working collaborative with fellow members of the professional team to ensure our buildings stay ahead with the times.

MLB's wide-ranging client body has been an important component of the company's success over the last 30 years, underlined by the high degree of return business received. We place emphasis on building relationships and aim to strengthen ties as no practice can thrive in isolation.

MLB

SELECTED
WORKS

2019

ARCHITECTURAL PORTFOLIO

CAPE TOWN

3rd Floor Office
33 Martin Hammerschlag Way
Foreshore
Cape Town

021 180 1652



@MLBArchitects



@mlb_arch

COMMERCIAL

THE ROCKEFELLER



CAPE TOWN



Ryan Joffe &
Narrative



16 St mixed use
development with
Hotel component



15 500+SQM

Crn Cristiaan Barnard St &
Martin Hammerschlag Way,
Foreshore
Cape Town

CURRENT PROJECTS



COMMERCIAL

THE BOULEVARD

CAPE TOWN

REDEFINE

Coner Pontac & Nelson Road
Woodstock
Cape Town

COMMERCIAL

10 000 SQM

CURRENT PROJECTS



COMMERCIAL

SASSI VARIOUS



VARIOUS LOCATIONS



SASSI

BURGER KING EXCELLENT MEAT

ABSA CASH CENTRE ABSA

BROADWAY PARK A.MARCUS



STORAGE



VARIOUS SQM

CURRENT PROJECTS



COMMERCIAL

SASSI VARIOUS



VARIOUS LOCATIONS



SASSI



STORAGE



VARIOUS SQM

BURGER KING EXCELLENT MEAT

ABSA CASH CENTRE ABSA

BROADWAY PARK A.MARCUS

CURRENT PROJECTS



PUBLIC SECTOR

NNR

CAPE TOWN

NATIONAL
BUILDING
REGULATOR

OFFICE BUILDING

1200 SQM

CURRENT PROJECTS



COMMERCIAL

WEMBLEY SQUARE II


 CAPE TOWN

 FAIRCAPE

NEWLANDS

ERIS

 MIXED USE

 8000SQM

HARBOUR PLACE GROWTHPOINT

45 BREE STREET

ERIS



COMMERCIAL

WEMBLEY SQUARE III



CAPE TOWN



FAIRCAPE



MIXED USE



NEWLANDS

ERIS

HARBOUR PLACE GROWTHPOINT

45 BREE STREET

ERIS



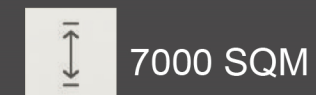
COMMERCIAL

THE EQUINOX



MEDIA 24

NASPERS



PINNACLE

SOLOMON BROS

80 STRAND STREET

EMIRA



EDUCATIONAL

UJ NANO



JOHANNESBURG



UNIV. JHB



LECTURE HALL /
INNOVATION LAB



2500 SQM

CITY VARSITY KLOOF STREET

INTERNATIONAL SCHOOL
HOUTBAY

BUSINESS SCHOOL US



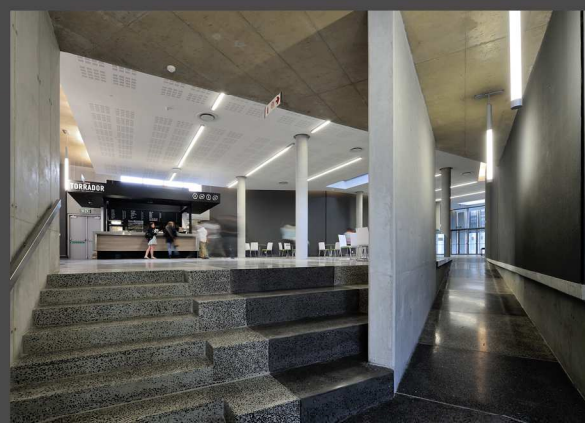
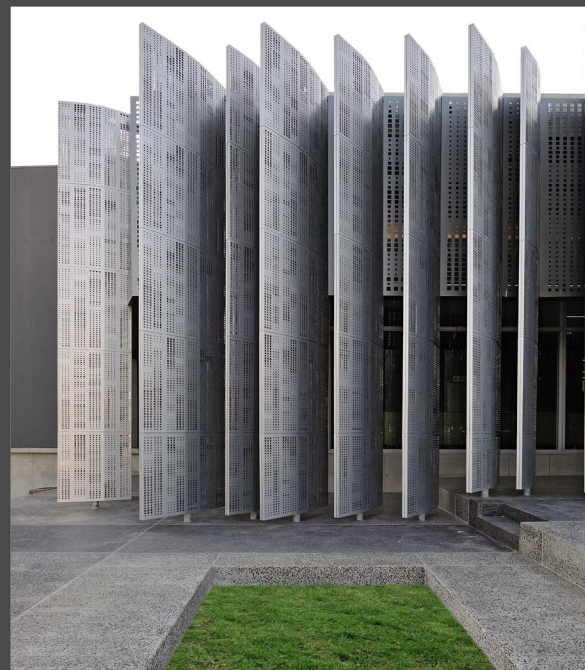
EDUCATIONAL

TYGERBERG AUDITORIUMS



BURIN SCHOOL BROOKLYN

HERZLIA MIDDLE SCHOOL



RESIDENTIAL

THE LEGACY



CAPE TOWN



BERMAN BROS

THE ODYSSEY

BERMAN BROS



APARTMENTS



6500 SQM

ST JOHNS

BERMAN BROS

8 & 9 HIGGO RD

FAIRCAPE



RESIDENTIAL

THE BANTRY BAY

 CAPE TOWN



MIDNIGHT FEAST

ECLIPSE

FAIRCAPE



APARTMENTS



6500 SQM

CAMPS BAY BEACH

BERNETT

OUDEKRAAL

BLOOMBERG



RESIDENTIAL

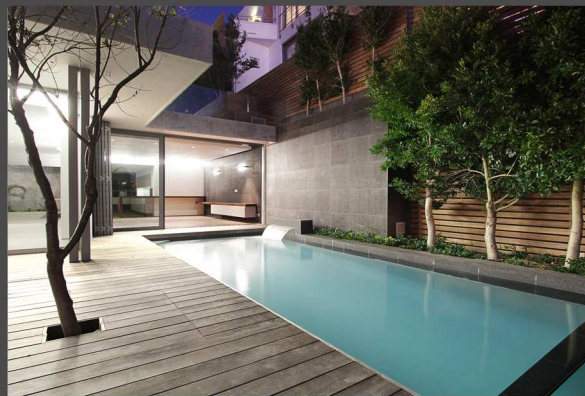
CAMPS BAY BEACH VILLAS

 CAPE TOWN

 PRIVATE

 5 LUXURY
APARTMENTS

 2600 SQM



RESIDENTIAL

The Beacon

 CAPE TOWN

 SIGNATURA

 APARTMENTS

 2000 SQM



RETAIL

ZARA


 CAPE TOWN

 ZARA

H&M (CT, DBN)

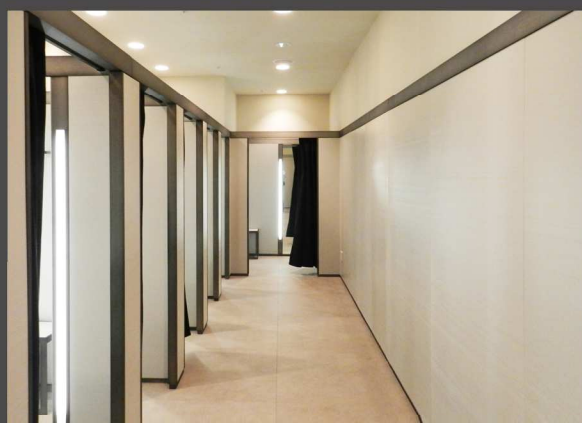
H&M

 SHOP

 2500 SQM

ZARA (CT, DBN, JHB)

ZARA



HOSPITALITY

PEPPER CLUB HOTEL



GORGEOUS GEORGE PLANTEAM



GELN BOUTIQUE HOTEL PRIVATE

HARPERS HOUSE

PLANTEAM



HOSPITALITY

SOUTH BEACH

 CAPE TOWN

 FAIRCAPE

OCEAN VIEW HOUSE

PRIVATE

 HOTEL

 1000 SQM

PLANET AFRICA

PRIVATE



INDUSTRIAL
STOR-AGE



CAPE TOWN



SASSI



STORAGE

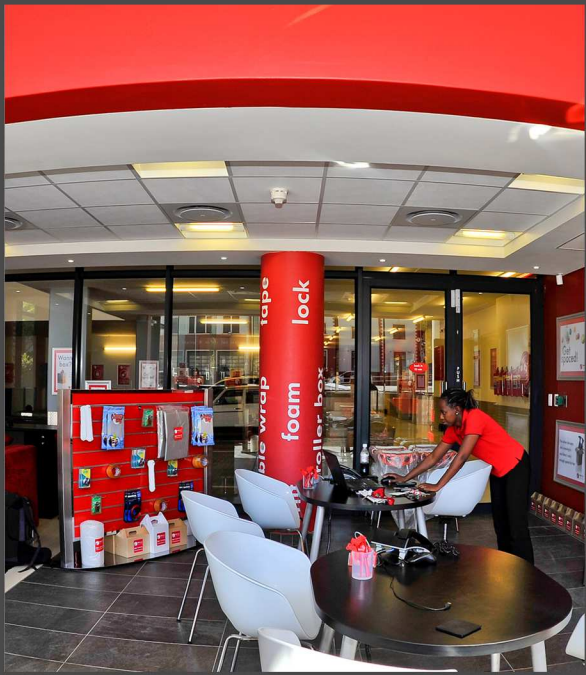


12 000 SQM

BURGER KING EXCELLENT MEAT

ABSA CASH CENTRE ABSA

BROADWAY PARK A.MARKUS




INDUSTRIAL
STOR-AGE

 CLAREMONT

 SASSI

BURGER KING EXCELLENT MEAT

 STORAGE

 10 600 SQM

ABSA CASH CENTRE ABSA

BROADWAY PARK A.MARKUS

